

PROFILE

Issue 8 Summer 2011

in this issue...

RUSSWOOD

selected sustainable timber
FLOORING • CLADDING • DECKING

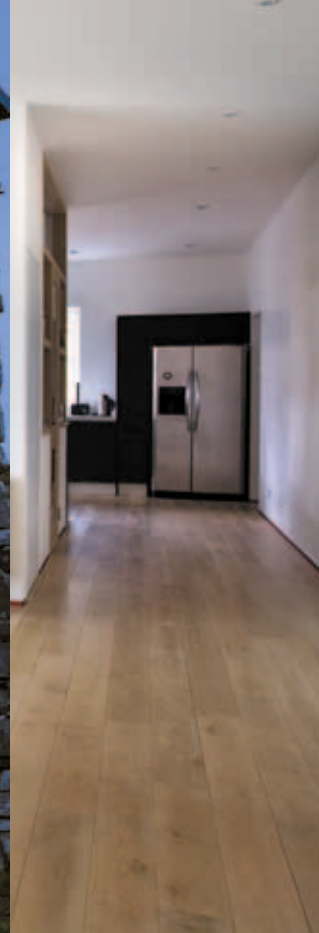
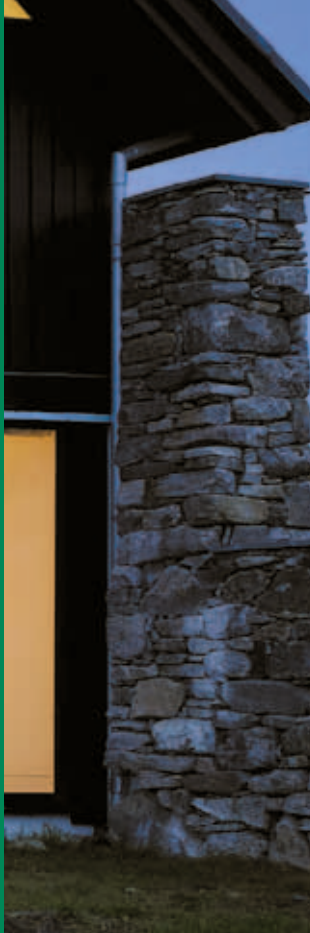


Awards in the face of adversity

Connoisseur's choice

Corner of Glasgow forever slip-resistant

Factory coated cladding



Awards in the face of adversity...



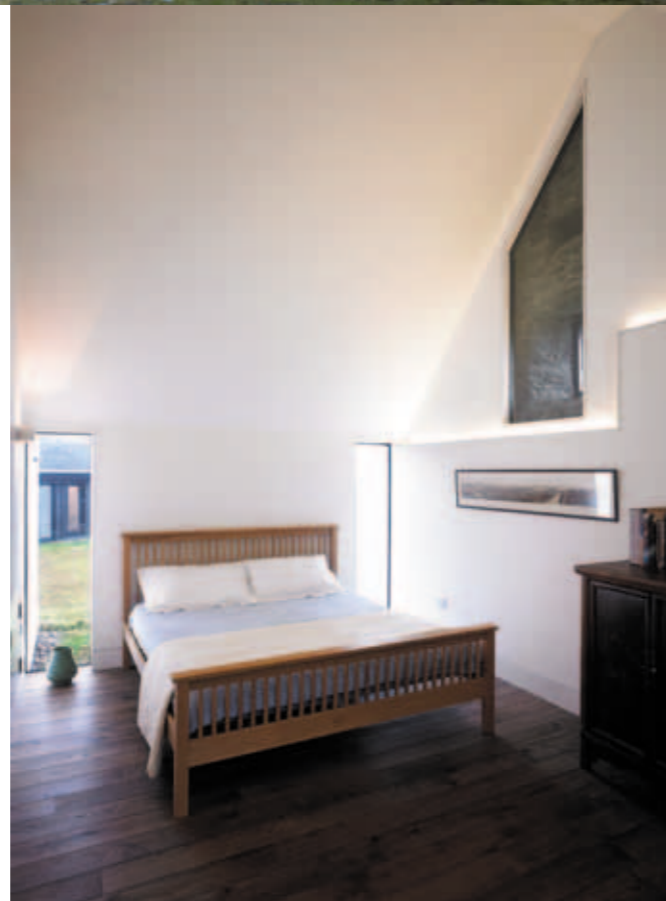
When WT Architecture were given the brief for The White House, on the stunning Hebridean Isle of Coll, the task ahead must have given them pause for thought. Take one 18th Century listed ruin, add a coastal location within an Area of Outstanding Natural Beauty, place upon sand foundations (with Bronze Age Pottery hidden beneath – cue an archaeological survey!) and turn it into a comfortable, modern family home.

The design of the home had to encompass several factors: It needed to embrace the rugged location whilst withstanding the associated weather (wild enough to cause repeated delays during construction); provide a space flexible enough to change with the demands of an evolving family life; blend the existing ruin with the new build (whilst simultaneously halting and preventing any further deterioration); and do all this in such a way to keep the planners happy!

The solution to this was to utilise the existing structures

and surrounding materials in the underpinned and secured ruin, whilst simultaneously “marrying” the new building into the old. Any new materials needed for the site had to be lightweight and/or locally sourced, in order to keep both transport and environmental costs low. Russwood’s Scotlarch® cladding was perfect for this remit, and was chosen to clad the new build alongside the recycled stonework from the outbuildings surrounding the ruin.

It is testament to the dedication of the clients that when Christmas came (seven months before the completion of a two year build), they chose to visit our flooring showroom with their contractor, Spey Building & Joinery, to pick out their ideal floor for their home. Russwood’s Chateau Ebony boards were chosen by the clients to grace the floors of their dream house, with solid boards (150x20mm) for the first floor, and a slightly wider finish (189x20mm) in an engineered board for the ground floor. The engineered floor was chosen in deference to the underfloor heating,



as the composition of the engineered board is capable of withstanding the additional demands the system places on the boards.

The White House is now not only a well-loved and lived in family home, but is repaying all the hard work and effort

that was put into the design and build by winning several awards. So far it has scooped the Edinburgh Architectural Association’s Ambassador Award and a coveted RIBA 2011 award, with the potential to grab a couple more before the year is out. Accolades indeed!

Connoisseur’s choice

The Stables, Warehouse in Inch, Aberdeenshire, is so much more than merely a home. It is also testament to the vision, skill and dedication of Douglas and Carol Forrest, and a beautiful example of the work that Acanthus Architects df (of whom Douglas is a director) can produce. This isn’t an isolated opinion; Aberdeen Society of Architects credited the property with an award for Alterations and Extensions plus a commendation for Conservation & Environmental Regeneration at this year’s ASA awards. In the 2008 Aberdeenshire Council Design and Conservation Awards The Stables was awarded two distinctions.

The Stables itself dates back to the year 1790, when its original purpose was to serve the Warehouse mansion, and is situated on a site that is steeped in history and surrounded by spectacular views. Douglas has designed and built a home that has maximised these elements, and has blended the old and new to stunning effect. Keeping the interior clean and modern highlights the original details maintained within the house, such as the 18th Century wall and stable stairs lovingly incorporated into the wall of the dining room. Large windows and plenty of glass do credit to the views whilst maximising the light within the property and adding to the contemporary feel of the Forrests’ home.



Photograph - Douglas Gibb

The 17th Century Natural White Rolled Oak floor boards chosen by Douglas to grace the floors of his award winning home also maintain this careful balance of old and new. The limed wash and long lengths of board complement the clean, bright flow of the design throughout the stable building, while the distressed finish and hand filled knots of the boards pay homage to the original features of the building.

The fact that Douglas chose to come to us for his floor is something we are justifiably proud of. He says “I am extremely pleased with the colour and quality of my floor, Russwood’s wide range of choice and all the technical support offered by the staff there.” High praise indeed, and in this case we can certainly claim to be “connoisseur’s choice”.

A little corner of Glasgow forever slip-resistant



In as much as it is possible to stumble across our slip resistant decking, visitors to Edington Street in Speirs Locks, Glasgow run the risk of doing precisely that in what is possibly the most innovative use of it yet!

7N Architects were tasked in 2009 by The Glasgow Canal Regeneration Partnership with “Growing the Place”

into a vibrant and attractive cultural quarter, tapping into and building upon the existing energy present in the arts campus and cultivating the vibe of a cultural quarter through high profile arts. The Masterplan itself won an award from the British Urban Regeneration Association, and the Scottish Government since have pronounced it

to be an ‘Exemplar’ project in the Scottish Sustainable Communities Initiative.

When it came to the first part of the project, which was to provide a physical and visual connection between the Scottish Opera and the Royal Scottish Academy of Music and Drama, the design incorporated a performing platform which accomplished precisely that. Helena Huws, 7N’s project architect, came to us as, “we have used Russwood for numerous projects and they have consistently provided high quality products backed up with excellent technical service. The product had the slip resistant qualities we needed for this public platform which will be used by students and

staff of RSAMD and Scottish Opera”. The platform, which doubles as a link between the two arts buildings, is destined to become part of a greater whole. The eventual aim for Edington Street is to turn it into a vehicle free, flexible communal space that can be colonised by the arts organisations for performances, events, teaching and gatherings. We will enjoy seeing the project develop and grow with our decking, quite literally, ‘centre stage’.

On reflection, in a city on the west coast of Scotland, the use of Russwood’s Gripdeck in an outdoor stage must be considered essential if the performers are to keep their concentration on their performance!

Factory coated cladding – from Edinburgh to Middlesex



When LOM architecture and design were commissioned to amalgamate two schools, they understood that they not only needed to physically combine the buildings, they had to create an identity that would unite the schools visually as well. After much consultation with all involved, the design they created to achieve this involved an eye-catching arrangement of Russwood's factory-coated Accoya cladding.

Edd Rushton, the architect in charge of the project told us, "Painted Accoya profiles provided a durable and cost-effective way of bringing new life to a tired 1970's façade and creating a vibrant new public face for the school. Russwood supplied pre-coated Accoya cladding panels, as well as thicker profiles used in the louvred sun-screen, and offered specification and detailing advice throughout the project."

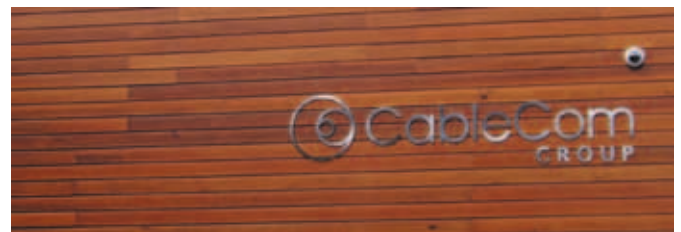
The bright primary colours they chose certainly added

a cornucopia of hues to our coating facility for a while! On reflection though, we have to say the colours look outstanding gracing the walls of West Lodge Primary School and, no matter what the weather throws at the boards, they will continue to brighten the days of both children and staff alike.

It isn't all about eye-popping colour when it comes to factory-coated cladding. When Arthur Reid, Manager at Cablecom chose Russwood's Architect Select Western Red Cedar to grace the headquarters in Old Edinburgh City, he wanted the beautiful figuring of the wood to remain visible, but also for the natural colours in the cedar to be maintained, avoiding the weathering that occurs over time. Russwood coated the cladding in a translucent coating, which perfectly suited

Arthur's demands, creating a look to the building that is true to his vision.

To keep up with the demands of our customers, Russwood has recently invested in a state-of-the-art vacuum coating facility – the first of its kind in Scotland. This facility enables us to offer factory-coated timber products in a wide variety of colours. The controlled vacuum coating process ensures that all four sides of the board are covered in a uniform thickness of over 100 microns (as opposed to the variable thickness of 40-75 microns usually achieved with an on-site application). This offers a significant increase in the life of the coating, reduces the need for maintenance and, perhaps most importantly in our changeable climate, neatly sidesteps the need to wait for a dry day!



Improving our service

We here at Russwood are expanding our CPD programme, and introducing a new face to the team in one fell swoop... please extend a warm welcome to Dorothy Air.

She has, alongside her many duties, taken over the organisational side of Russwood's CPD seminars.

Not content with passing on our considerable knowledge regarding timber cladding, we have achieved accreditation from the aptly named CPD Certification Service for our newly created Timber Flooring CPD. Those of you fortunate enough to have availed yourself of our Timber Cladding Seminar will be aware of the depth of information our presentations provide - the Flooring CPD will

give you similar insight into both solid and engineered timber floor boards, the benefits, choices available, options for use and the technical knowledge required to underpin the above.

For further information, or to arrange a presentation, please contact Dorothy at dorothy.air@russwood.co.uk or give her a call on 01540 673648.

