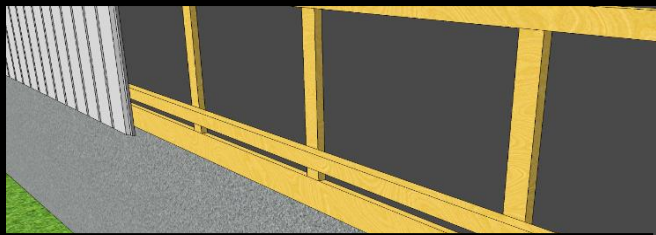
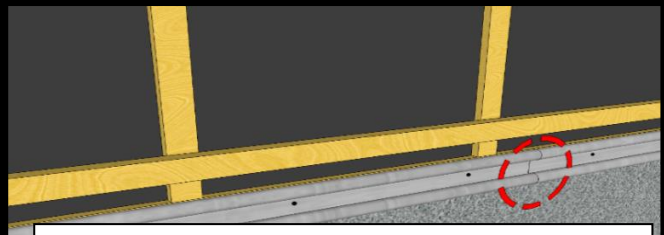


# Installation of FB Cavity Barrier

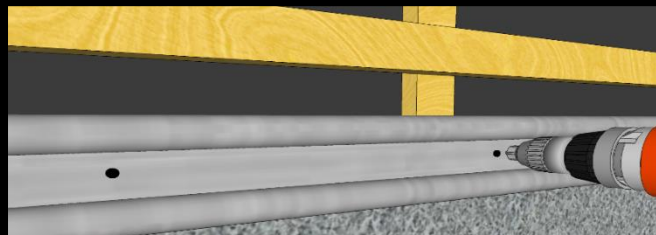
Assembly instructions according to  
product documentation RISEFR 010-0238



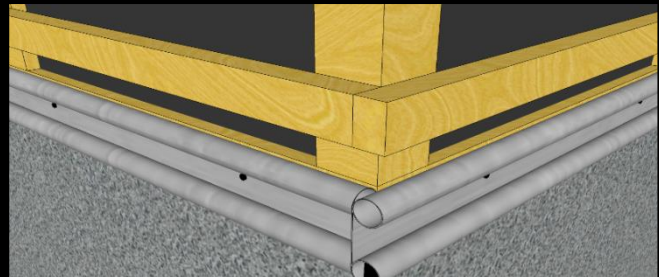
Wall before installing FB Cavity Barrier



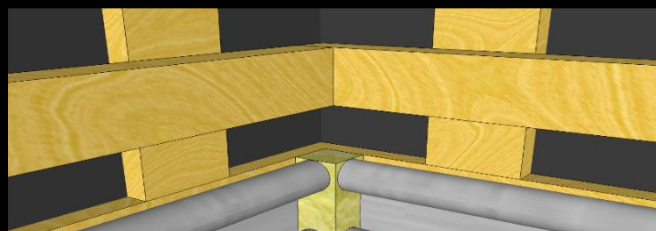
FB Cavity Barrier installed continuously with the intumescent material in the lower roll



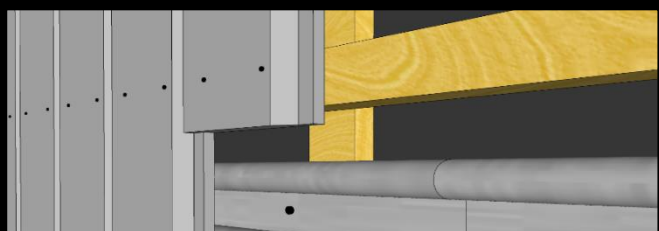
FB Cavity Barrier fixed by stainless steel screws 2-3 screws per meter



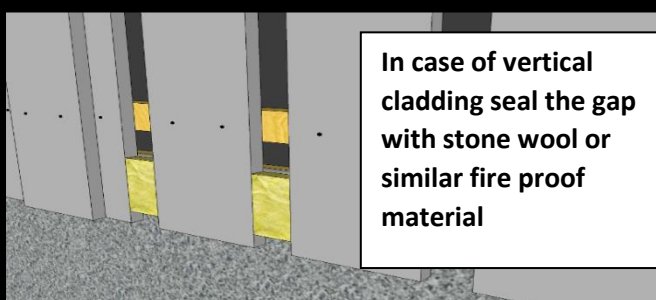
Installed with overlap at the outside corner



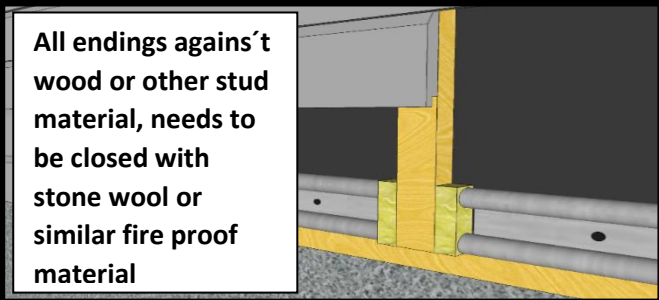
Seal the inside corner with stone wool or similar fire proof material



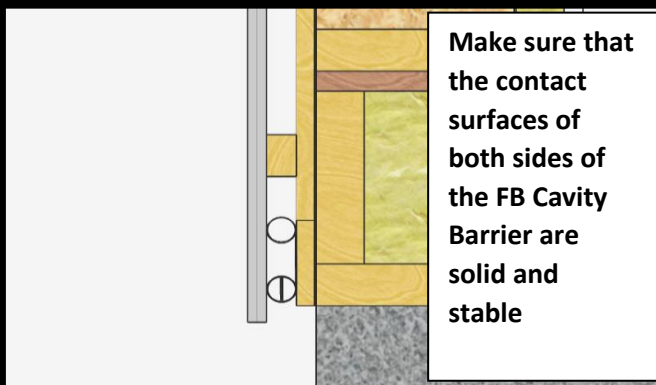
Install the cladding directly on top of the cavity barrier



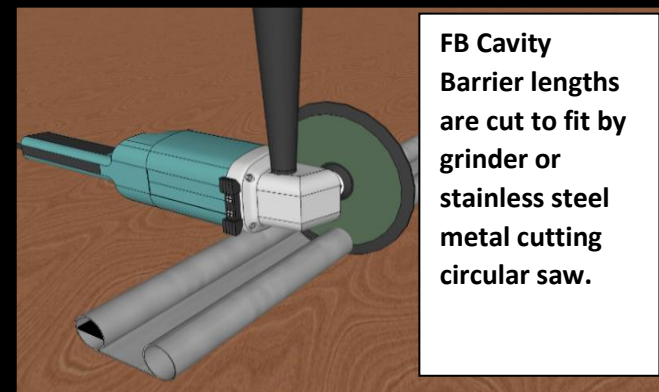
In case of vertical cladding seal the gap with stone wool or similar fire proof material



All endings against wood or other stud material, needs to be closed with stone wool or similar fire proof material



Make sure that the contact surfaces of both sides of the FB Cavity Barrier are solid and stable



FB Cavity Barrier lengths are cut to fit by grinder or stainless steel metal cutting circular saw.